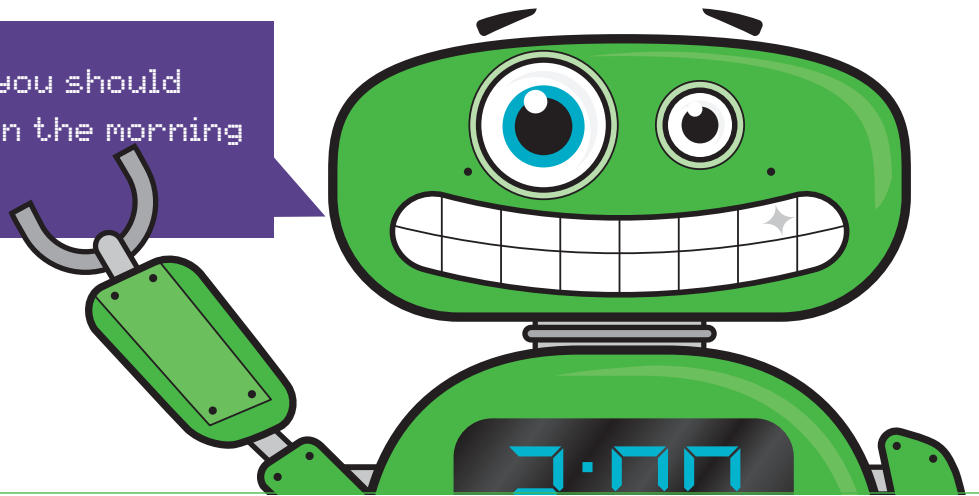


Brush and floss with a robot

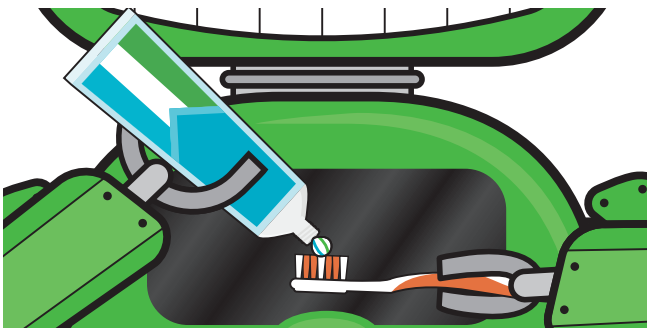
Make brushing more fun by pretending you are a robot. Read these directions in a robot voice while a parent, grandparent, brother or sister brushes.

"I have calculated that you should brush your teeth once in the morning and once at night."



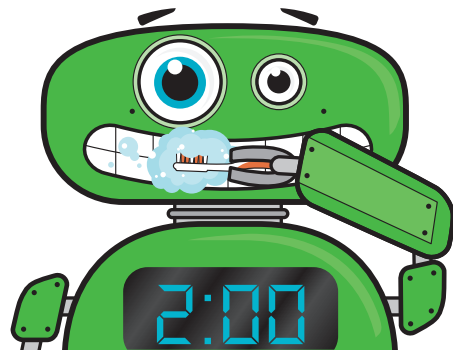
1

"Transfer fluoride toothpaste the size of a pea to your toothbrush."



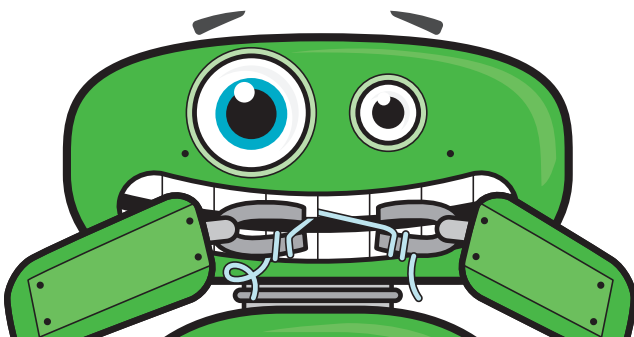
2

"Once brushing cycle begins, it should continue for 2 full minutes."



3

"Once daily, floss your human teeth to remove particles."



4

"Now that teeth shine like a robot, rinse the toothbrush and put away until next brushing cycle."

