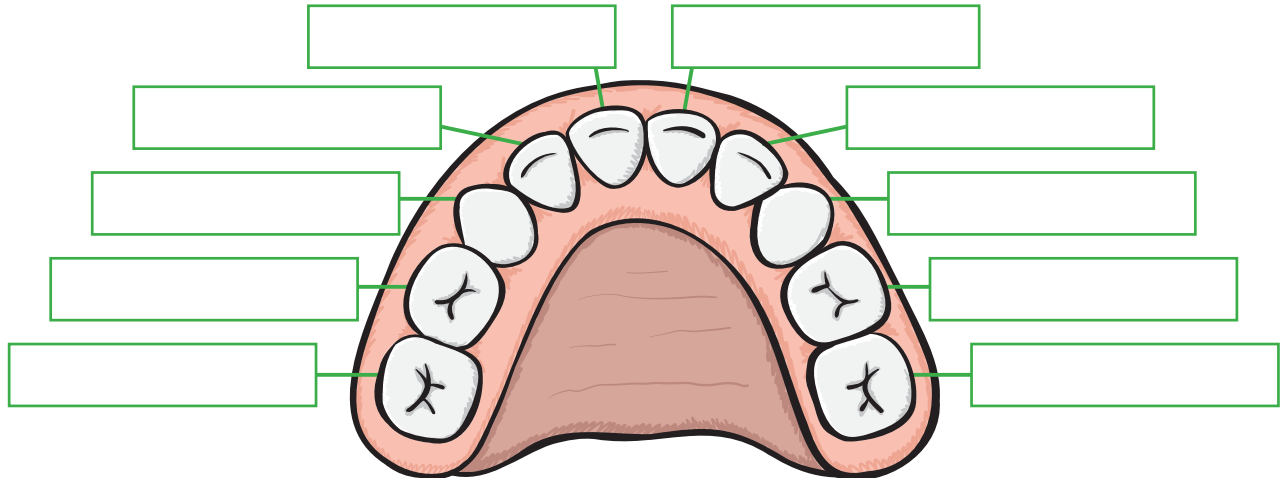


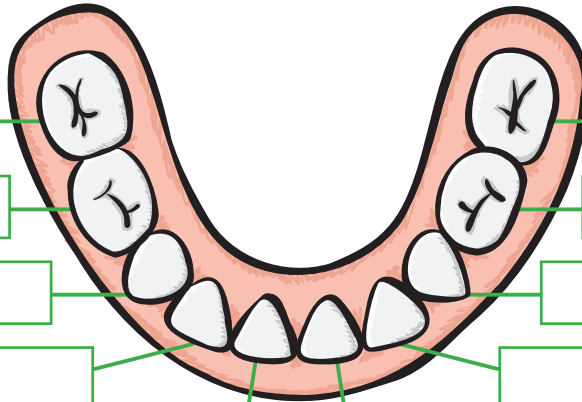
Track your lost teeth

When you lose a tooth, color it on your Tooth Tracker. Mark down details like your age and where you lost the tooth.

Lost tooth details:



Lost tooth details:



Lost tooth details:



Why do baby teeth (even mine!) fall out?

You lose your baby teeth to make room for your adult teeth. Plus, it gives me a job!

