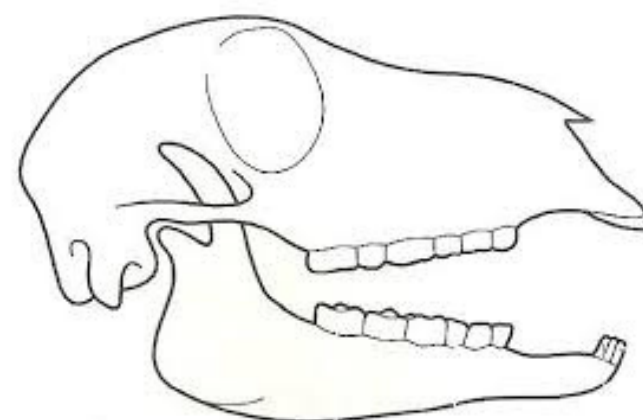
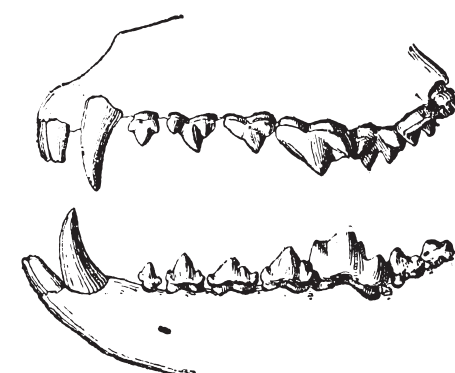
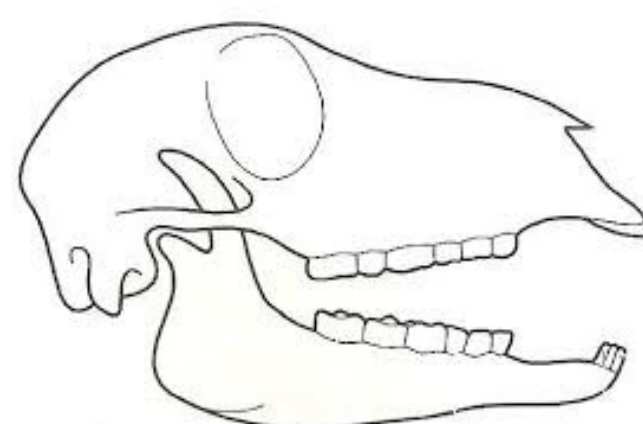
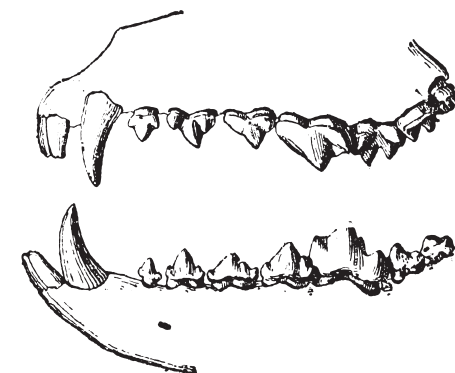
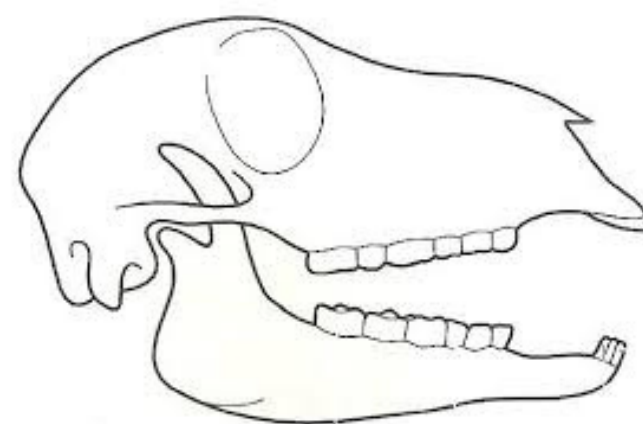
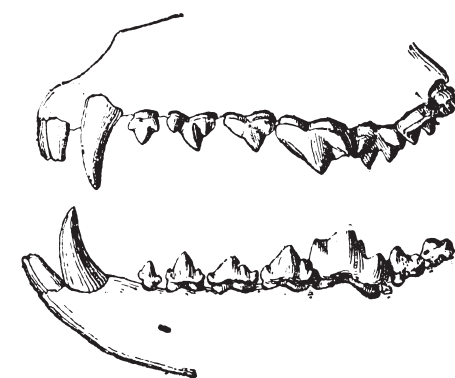
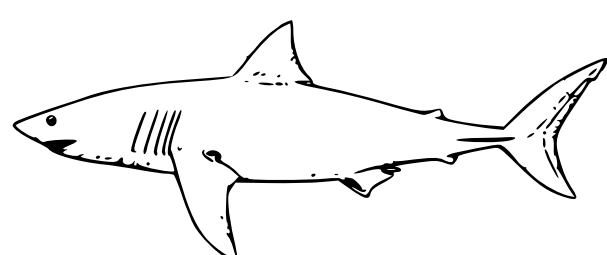
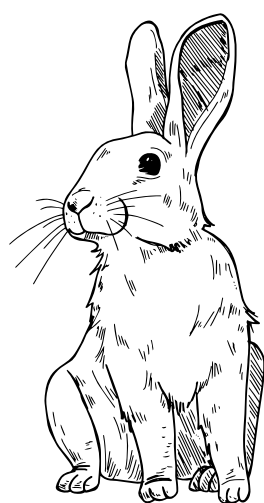
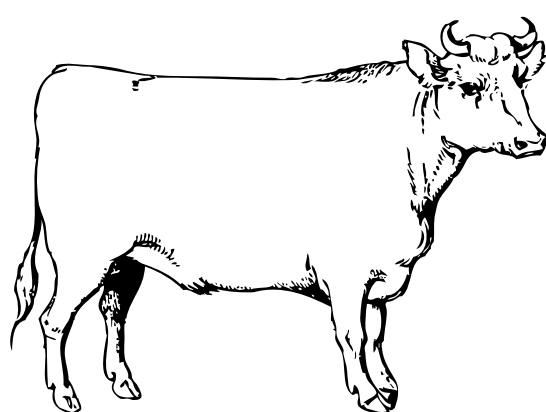
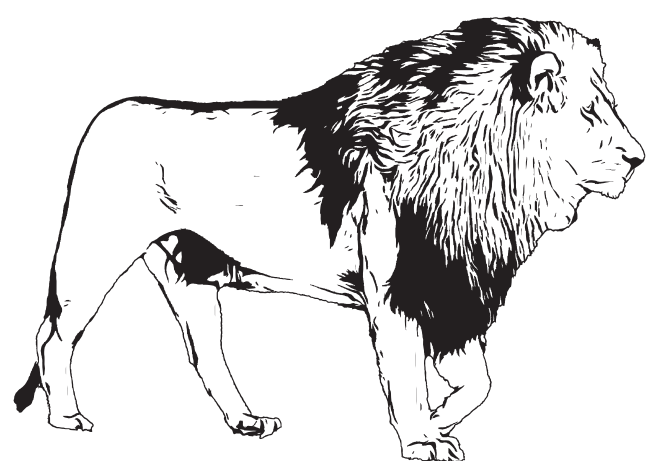


# Carnivores and Herbivores: What's the Difference?

Using the images below, match up the carnivores and herbivores with their respective types of teeth using your knowledge of animal teeth and the information sheet attached below.





# Carnivores and Herbivores: What's the Difference?

The animals above are classified as herbivores and carnivores. But what do those words mean, and what are the differences between them? Use the sheet below to help you discover the differences between herbivores and carnivores, then complete the matching activity shown above.

An herbivore is an animal that feeds on plants.

A carnivore is an animal that feeds on meat.

An animal's diet affects how their teeth are shaped. Herbivores have flatter teeth meant for grinding plants rather than tearing into meat. Carnivores have sharper teeth to allow them to tear through meat as they feed.

Carnivore



A lion is a good example of a carnivore. See its sharp teeth that help it slice through meat?

Herbivore



A rabbit is an example of an herbivore. In the wild, you may see it eat grass, weeds, and flowers. As a pet, you might give it hay, lettuce, carrots, and more!